

**TRAILER CARGO 1/2 TON 2 WHEELED AND ALL OTHER TYPES
FITTING OF DRAWBAR SKID SUPPORT
MODIFICATION INSTRUCTION**

Issue of this instruction is authorized by the CONMEA

Introduction

1. This instruction details the fitting of a skid support to the drawbar of the trailer. The purpose of the skid bar is to protect the coupler assembly when the trailer is disconnected from the vehicle and lowered to the ground without using the adjustable support stand.

General

2. **Estimated Manhours to Perform.** 1.0 (initial planning only).
3. **Priority.** Group 2.
 - a. All trailers on issue to units are to be modified when next in workshops for repair.
 - b. All trailers held by Supply Units should normally be modified before issue. However, where this would delay priority issues, equipments may be released unmodified providing their record books are endorsed with details of outstanding modifications.
4. **Modification to be Applied to.** All subject trailers.
5. **Item Affected.** Trailer drawbar.
6. **Action Required.** By RAEME units authorized to carry out field and base repair in accordance with WKSP A 850.

TABLE 1 – STORES REQUIRED (To be demanded through normal supply channels)

Item	DSN	Designation	Qty per Equip
1.	9510-66-097-0964	STEEL BAR, CARBON, HOT ROLLED, GRADE 250, FLAT, 50 mm w by 8 mm thk	As required

Detail

7. Modification procedure is as follows:
 - a. Manufacture skid bar as shown in Fig 1 using item 1 from Table 1.
 - b. Weld the skid bar to the drawbar, in the position shown in Fig 2, in accordance with WKSP B010.
 - c. Clean and paint the worked area in accordance with WKSP B 700.

Modification Record Plate

8. Deface the numeral 5 on the modification record plate fitted to cargo trailers. Other type trailers do not have a modification plate fitted.

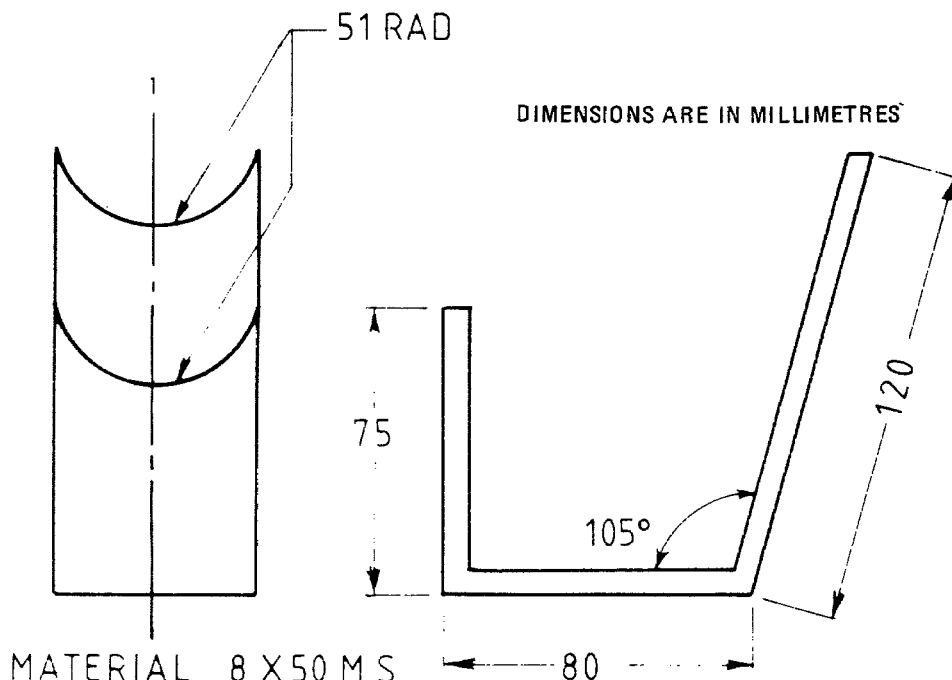
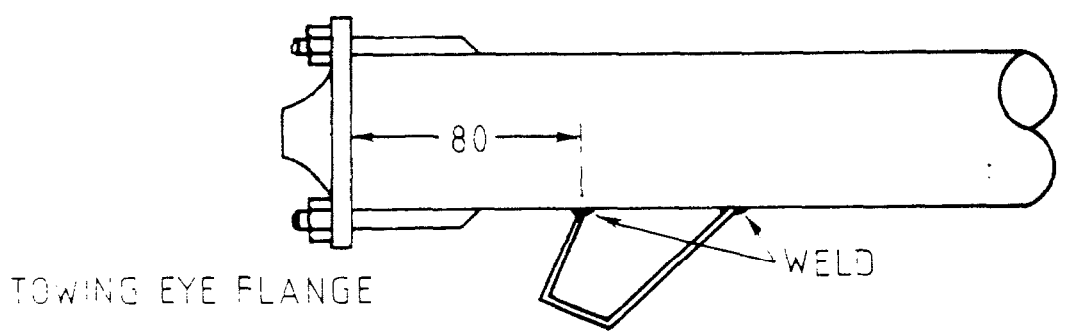


FIG 1 – DRAWBAR SKID SUPPORT



DIMENSIONS ARE IN MILLIMETRES

FIG 2 - POSITIONING OF DRAWBAR SKID SUPPORT

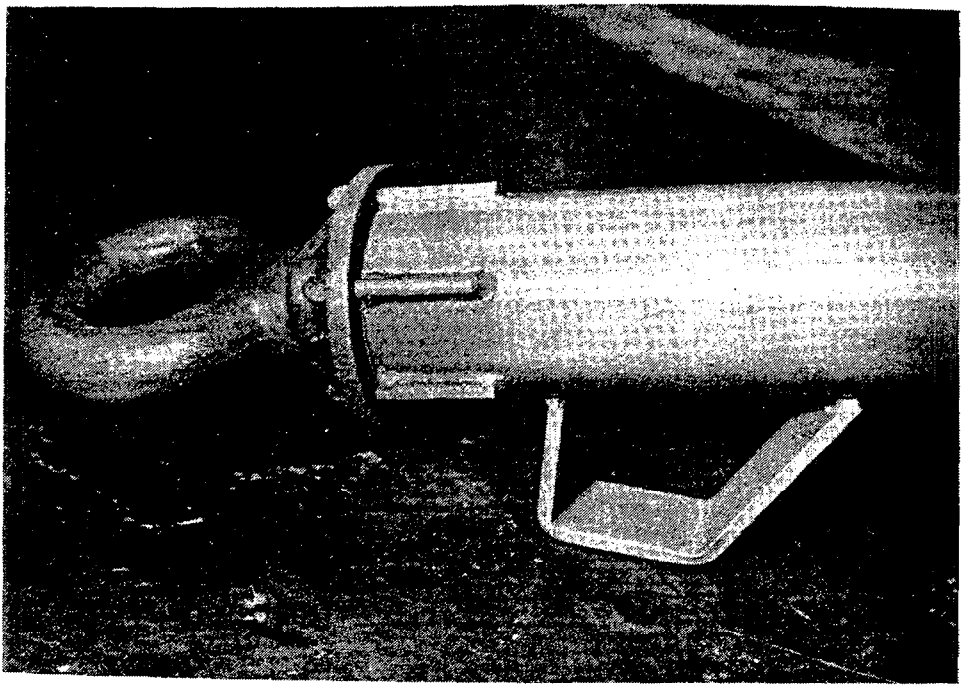


FIG 3 - COMPLETED MODIFICATION

END